



activate your warranty and meet your product

Scan the QR code **within 7 days** of receiving your product to activate your warranty and experience all the product benefits!



portable steam sauna

INSTRUCTION MANUAL AND WARRANTY INFORMATION

SP-SN300 | L-05023, Rev. 1

IMPORTANT SAFETY INSTRUCTIONS

WHEN USING ELECTRICAL PRODUCTS, BASIC SAFETY PRECAUTIONS SHOULD ALWAYS BE FOLLOWED, INCLUDING THE FOLLOWING:

READ ALL INSTRUCTIONS BEFORE USING.

DANGER – TO REDUCE THE RISK OF ELECTRIC SHOCK:

- Always unplug appliance immediately after using and before cleaning.
- DO NOT reach for an appliance that has fallen into water. Unplug it immediately.
- DO NOT place or store appliance where it can fall or be pulled into a tub or sink.
- DO NOT place in or drop into water or other liquids.
- Use only in a dry area.

WARNING – TO REDUCE THE RISK OF BURNS, FIRE, ELECTRIC SHOCK, OR INJURY TO PERSONS:

- Use this appliance only for its intended use as described in this manual.
- DO NOT use attachments not recommended by Homedics; specifically, any attachments not provided with this unit.
- NEVER drop or insert any object into any opening.
- DO NOT use outdoors or operate where aerosol (spray) products are being used or where oxygen is being administered.
- NEVER operate the appliance if it has a damaged cord or plug, if it is not working properly, if it has been dropped or damaged, or dropped into water. Return the appliance to a Homedics Service Center for examination and repair.
- This appliance should never be left unattended when plugged in.
- This appliance is not a toy and is not to be used by children.
- Close supervision is necessary when this appliance is used near children or individuals with certain disabilities. Unsupervised use could result in fire or personal injury.
- Rest the appliance on a stable surface when placing on its resting pad.
- DO NOT allow the cord to contact heated surfaces. Do not pull or twist cord. Let appliance cool completely before putting away. Loop cord loosely around appliance when storing.
- This appliance has a polarized plug (one blade is wider than the other). As a safety feature, this plug will fit in a polarized outlet only one way. If the plug does not fit fully in the outlet, reverse the plug. If it still does not fit, contact a qualified electrician. Do not attempt to defeat this safety feature.
- DO NOT use an extension cord to operate appliance.
- Surfaces of the steamer are hot when in use. Do not touch heated surface of the steamer when in use.
- DO NOT place the steam outlet directly on any surface or on the appliance power cord while it is hot or plugged in.
- Unplug this appliance before filling or emptying the water, and when not in use.
- DO NOT operate steamer without properly filling the water in the steamer.
- NEVER add detergent or any chemicals into the steamer.
- NEVER yank cord to disconnect from outlet; instead, grasp plug and pull to disconnect.
- Burns could occur from touching hot parts, hot water, or steam. Use care when opening the steamer lid or when you turn the steamer upside down – there may be hot water in it.
- DO NOT hold hand in front of steam.
- To reduce likelihood of circuit overload, do not operate another high-wattage appliance on

the same circuit.

- Use caution when installing or removing an attachment as it may contain hot water from condensation. Ensure that the unit is off, and the attachment is dry or cooled off to avoid contact with hot water.
- NEVER use water containing additives.
- When emitting steam, this appliance may cause burns if it is used too close to the skin or body, or if it is used incorrectly. To reduce the risk of contact with hot steam emitting from the steam outlet, stay away from the steam nozzle when entering tent and position the foldable seat away from the steam nozzle.
- DO NOT handle plug with wet hands.
- Always unplug the unit when filling or moving the unit.
- Ensure that your hands are dry when operating the controls or removing the plug.
- Use steamer with care. May cause serious burns.
- DO NOT use over insensitive skin areas or in the presence of poor circulation. The unattended use of heat by children or incapacitated persons may be dangerous.
- NEVER touch the steam nozzle that is located inside the tent.
- NEVER place your hand or feet near the steam nozzle that is located inside the tent.
- DO NOT touch the steamer when it is already in operation unless you want to power off the unit.
- DO NOT handle the steamer immediately after use of the sauna. Unplug the steamer and let the unit rest and cool down for 20 to 30 minutes before handling the steamer.
- NEVER attempt to shift the sauna tent after setup. Steamer may topple and cause serious burns.

SAVE THESE INSTRUCTIONS

CAUTION – PLEASE READ ALL INSTRUCTIONS CAREFULLY BEFORE OPERATING.

- This product is intended for household use only.
- DO NOT use outdoors. For indoor use only.
- This product is not intended for medical use. It is intended only to provide a home sauna experience.
- Consult your doctor prior to using this product, if:
 - You are pregnant
 - You have a pacemaker
 - You have any concerns regarding your health
- NOT recommended for use by diabetics.
- NEVER leave the appliance unattended, especially if children are present.
- NEVER cover the appliance when it is in operation.
- DO NOT use this product for more than 15 minutes at a time.
- NEVER use this product directly on swollen or inflamed areas or skin eruptions.
- DO NOT use this product as a substitute for medical attention.
- This product should NEVER be used by any individual suffering from any physical ailment that would limit the user's capacity to operate the controls or who has sensory deficiencies.
- This unit should not be used by children or invalids without adult supervision.
- This appliance is intended for household use only.

PORTABLE STEAM SAUNA PRODUCT BEHAVIOR

OVERVIEW

Our sauna tent is designed to provide a relaxing and rejuvenating experience. It is normal for users to observe damp or wet spots in certain areas of the tent during and after use. This is a natural result of the sauna process and is not indicative of a product defect.

EXPECTED BEHAVIOR

1. Damp or wet spots around front window: The front window of the sauna tent is designed to remain clear for visibility. However, due to the high humidity inside the tent, condensation may form on the inside of the window. This can result in damp or wet spots appearing on the surface of the front window linen fabric.
2. Damp or wet spots around side zip door: The side zip door is designed for easy access in and out of the sauna tent. Due to the temperature difference between the inside and outside of the tent, condensation will form around the areas of the side zip door. This can result in damp or wet spots appearing around these areas, especially on the surface of linen fabric.

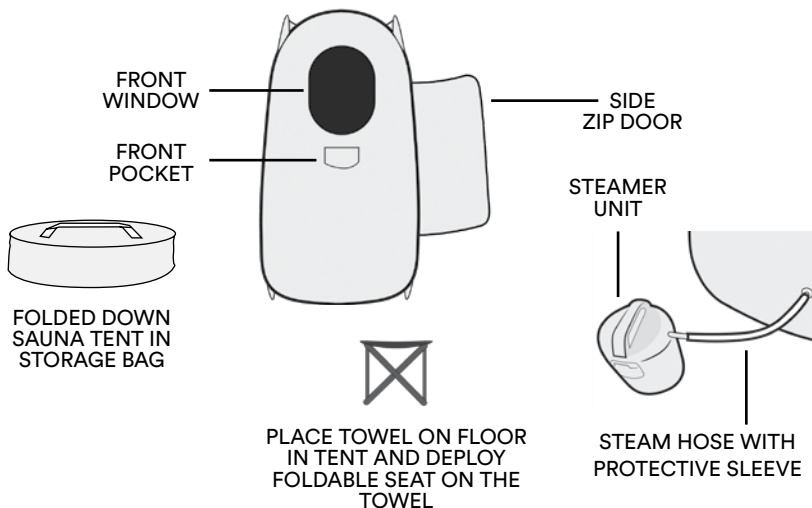
IMPORTANT NOTE

The appearance of damp or wet spots around the front window and side zip door is a normal part of the sauna experience and does not indicate a product defect. These spots are a result of the condensation process, which occurs when the warm air inside the sauna tent comes into contact with the cooler surfaces of the linen fabric around the front window and side zip door.

Please ensure to wipe down these areas and dry the tent thoroughly after each use to maintain the longevity of your sauna tent. Enjoy your sauna experience!

PORTABLE STEAM SAUNA

SAUNA TENT IN STANDING POSITION



HOW TO OPERATE

HOW TO USE AND OPERATE THE STEAMER



WARNING:

ADD WATER.

DO NOT add perfume, vinegar, or other chemicals or liquids into the steamer unit.



1. To get started ensure the unit is unplugged before filling the steamer with water. Fill with water to the max FILL line located on the inside of the steamer.

CAUTION: Do not fill water over the FILL line.



2. Close steamer lid. Ensure latch is locked in place. You should hear a snap sound when the lid is closed tightly. Firmly secure the hose to the outlet of the steamer.



3. Attach the other end of the hose to the input nozzle on the back of the tent. Secure it firmly, then adjust the sleeve over the hose properly.

CAUTION: Do ensure the hose between the steamer and the tent is straight and not bent. The hose is directing all steam into the tent hence the hose must not be bent or twisted in any manner.



4. Plug the steamer into a 120-volt AC electrical outlet and turn dial to desired program length.

TIP: Best to dial to 30 minute mark. Max is up to 60 minute program

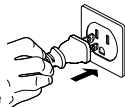
CAUTION: DO NOT extend sauna session beyond 15 minutes.

5. Place a towel down and position foldable seat over towel inside the sauna tent, zip up the side door, and wait 10-15 minutes for the steamer to warm up and produce steam.

TIP: Steam will be visible when ready, you can look through the front window for foggy steam conditions.

6. Once the steam has built up to desired condition, unzip the door and step in, sit down on the chair, and zip door closed.

TIP: To help regulate the sauna temperature, unzip front window to allow steam to vent out.



NOTE

- NEVER touch the steam nozzle that is located inside the tent.
- NEVER place your hands or feet near the steam nozzle that is located inside the tent.
- DO NOT touch the steamer when it is already in operation unless you want to power off the unit.
- DO NOT handle the steamer and/or steam hose immediately after use of the sauna, unplug the steamer and let the unit rest and cool down for 20 to 30 mins before handling.
- NEVER attempt to shift the sauna tent after setup. Steamer may topple and cause serious burns.

AFTER USE

1. Unplug the steamer from outlet.
2. Let the steamer cool down for at least 20-30 minutes before handling the unit.
3. After the steamer unit is cooled down enough, detach the hose from the steamer outlet.
CAUTION: Do not attempt to detach hose if you can still feel heat when near the hose. Use a cloth to wrap around the end of the hose when detaching.
4. Open the steamer lid with care and let the excess water cool down as there could be some excess water left in the steamer.
CAUTION: Wait for the water to cool (at least 20 mins) before attempting to empty the water from steamer. Steamer contents may be hot.
5. Remove water collected in the water holder, which is located just below the hinge of the steamer cover.
6. Pour excess water out of the steamer. Do ensure the excess water is cooled down enough.
7. Use a dry cloth to wipe down excess water in the steamer unit or leave it to dry before storing the unit.
8. Remove foldable chair from tent. Use a dry cloth to wipe down excess water and leave it to dry before storing the chair.
9. Use a dry cloth to wipe down excess water in the tent and leave it to dry before storing the unit.
10. Follow this link on how to fold the tent after ensuring it is dry to store into the bag.

HOW TO CARE & STORE

- Ensure the steamer and tent are dry before storing.
- Clean the exterior with a soft, damp cloth and wipe dry.
- Avoid sharp or abrasive objects contacting the steamer, tent, and chair. These objects can cause damage.
- Store in a cool, dry place.



SPECIFICATIONS

ELECTRICAL RATING

120 VAC, 60 Hz, 1000 W

STEAM RELEASE TIME

10 - 15 minutes after activating timer

STEAMER CAPACITY

60.87 oz. \pm 0.34 oz. / 1800 \pm 10 mL

RUNTIME

up to 60 minutes. Runtime is based on dialed timer setting

OUT OF WATER PROTECTION

Steamer unit will auto power off after detecting no water presence in the steamer unit

TROUBLESHOOTING

PROBLEM	POSSIBLE CAUSE	SOLUTION
Water or damp spots on front window and side door	<ul style="list-style-type: none">• Water condenses within the tent• Water condenses on front window within the tent	<ul style="list-style-type: none">• Natural occurrence when using the product• Water or damp spots will disappear after tent is fully dry
No power (power led is off)	<ul style="list-style-type: none">• Unit is not plugged in• Unit is not turned on• No power at unit	<ul style="list-style-type: none">• Plug unit in• Check if steamer dial is turned to desired program length• Check circuits and fuses or try a different power outlet
No heating (heat led is off)	<ul style="list-style-type: none">• Steamer dial could be in off position	<ul style="list-style-type: none">• Turn steamer dial clockwise to start heating
Little or no steam	<ul style="list-style-type: none">• Out of water• Auto-off activated• Steam hose bent or obstructed• Steam hose could be loose or not connected properly	<ul style="list-style-type: none">• Power off steamer, open lid with care to check water level before adding in water• Check hose connection, be careful of hot surfaces• Check hose connection. In event the hose became loose, please power off steamer and wait for it to cool down before attempting to reconnect hose

SUPPLIER'S DECLARATION OF CONFORMITY

Product Description: portable steam sauna

Model Number: SP-SN300

Trade Name: Homedics

FCC Compliance Statement

This device complies with Part 15 of the FCC Rules. Operation is subject to the following two conditions: (1) This device may not cause harmful interference, and (2) This device must accept any interference received, including interference that may cause undesired operation.

U.S. Contact Information

Company: Homedics, LLC.

Address: 3000 N Pontiac Trail, Commerce Township, MI 48390

8:30am-7:00pm EST Monday-Friday 1-800-466-3342

Homedics is not responsible for any radio or TV interference caused by unauthorized modifications to this equipment. Such modifications could void the user authority to operate the equipment.

This equipment has been tested and found to comply with the limits for a Class B digital device, pursuant to Part 15 of the FCC Rules. These limits are designed to provide reasonable protection against harmful interference in a residential installation. This equipment generates, uses, and can radiate radio frequency energy and, if not installed and used in accordance with the instructions, may cause harmful interference to radio communications. However, there is no guarantee that interference will not occur in a particular installation. If this equipment does cause harmful interference to radio or television reception, which can be determined by turning the equipment off and on, the user is encouraged to try to correct the interference by one or more of the following measures:

- Reorient or relocate the receiving antenna.
- Increase the separation between the equipment and receiver.
- Connect the equipment to an outlet on a circuit different from that to which the receiver is connected.
- Consult the dealer or an experienced radio/TV technician for help.

CAN ICES-003(B)/NMB-003(B)



1-YEAR LIMITED WARRANTY

Homedics sells its products with the intent that they are free of defects in manufacture and workmanship for a period of 1 year from the date of original purchase, except as noted below. Homedics warrants that its products will be free of defects in material and workmanship under normal use and service. This warranty extends only to consumers and does not extend to Retailers.

To obtain warranty service on your Homedics product, contact a Consumer Relations representative for assistance. Please make sure to have the model number of the product available.

Homedics does not authorize anyone, including, but not limited to, Retailers, the subsequent consumer purchaser of the product from a Retailer or remote purchasers, to obligate Homedics in any way beyond the terms set forth herein. This warranty does not cover damage caused by misuse or abuse; accident; the attachment of any unauthorized accessory; alteration to the product; improper installation; unauthorized repairs or modifications; improper use of electrical/power supply; loss of power; dropped product; malfunction or damage of an operating part from failure to provide manufacturer's recommended maintenance; transportation damage; theft; neglect; vandalism; or environmental conditions; loss of use during the period the product is at a repair facility or otherwise awaiting parts or repair; or any other conditions whatsoever that are beyond the control of Homedics.

This warranty is effective only if the product is purchased and operated in the country in which the product is purchased. A product that requires modifications or adoption to enable it to operate in any other country than the country for which it was designed, manufactured, approved and/or authorized, or repair of products damaged by these modifications is not covered under this warranty.

THE WARRANTY PROVIDED HEREIN SHALL BE THE SOLE AND EXCLUSIVE WARRANTY. THERE SHALL BE NO OTHER WARRANTIES EXPRESS OR IMPLIED INCLUDING ANY IMPLIED WARRANTY OF MERCHANTABILITY OR FITNESS OR ANY OTHER OBLIGATION ON THE PART OF THE COMPANY WITH RESPECT TO PRODUCTS COVERED BY THIS WARRANTY. HOMEDICS SHALL HAVE NO LIABILITY FOR ANY INCIDENTAL, CONSEQUENTIAL, OR SPECIAL DAMAGES. IN NO EVENT SHALL THIS WARRANTY REQUIRE MORE THAN THE REPAIR OR REPLACEMENT OF ANY PART OR PARTS WHICH ARE FOUND TO BE DEFECTIVE WITHIN THE EFFECTIVE PERIOD OF THE WARRANTY. NO REFUNDS WILL BE GIVEN. IF REPLACEMENT PARTS FOR DEFECTIVE MATERIALS ARE NOT AVAILABLE, HOMEDICS RESERVES THE RIGHT TO MAKE PRODUCT SUBSTITUTIONS IN LIEU OF REPAIR OR REPLACEMENT.

This warranty does not extend to the purchase of opened, used, repaired, repackaged and/or resealed products, including but not limited to sale of such products on internet auction sites and/or sales of such products by surplus or bulk resellers. Any and all warranties or guarantees shall immediately cease and terminate as to any products or parts thereof which are repaired, replaced, altered, or modified, without the prior express and written consent of Homedics.

This warranty provides you with specific legal rights. You may have additional rights which may vary from state to state and country to country. Because of individual state and country regulations, some of the above limitations and exclusions may not apply to you.

For more information regarding our product line in the USA, please visit www.Homedics.com. For Canada, please visit www.Homedics.ca.

FOR SERVICE IN THE USA
CSERVICE@HOMEDICS.COM
8:30AM-7:00PM EST MONDAY-FRIDAY
1-800-466-3342

FOR SERVICE IN CANADA
CSERVICE@HOMEDICS.CA
8:30AM-5:00PM EST MONDAY-FRIDAY
1-888-225-7378

©2024 Homedics, LLC. All rights reserved.
Homedics and PerfectSteam are registered trademarks of Homedics, LLC.
Distributed by Homedics, LLC, 3000 N Pontiac Trail, Commerce Township, MI 48390
IB-SPSN300
Made in China